



MANTEBEA GARDENS



## OVERVIEW

Welcome to your dream home, where luxury meets functionality in every corner.

Step into the spacious living area, bathed in natural light from large windows that frame scenic views. With ample space for lounging and entertaining, this welcoming space sets the stage for memorable gatherings with family and friends.

Adjacent to the living area is the cozy family area, perfect for relaxed evenings spent bonding over movies or board games. Whether it's laughter-filled game nights or quiet moments of togetherness, this versatile space offers endless possibilities.

Entertain in style in the elegant dining area, where every meal becomes a special occasion. Featuring modern fixtures and room for a large dining table, this sophisticated space is ideal for hosting dinner parties or enjoying intimate family dinners.

Prepare culinary delights in the gourmet kitchen, equipped with high-end appliances, sleek countertops, and ample storage space. From quick weekday meals to elaborate feasts, this chef's haven is designed to inspire culinary creativity.

Retreat to the luxurious master bedroom, a serene sanctuary crafted for ultimate relaxation. With plush carpeting, a spacious layout, and a private ensuite bathroom, this tranquil oasis offers the perfect escape at the end of a long day.

Additional bedrooms provide comfortable accommodations for family members or guests, each boasting generous closet space and cozy ambiance.



DIGITAL  
ADDRESS  
**GZ-172-4019**

JVHF + 53 Spintex  
Accra, Ghana



## ABOUT BESTWORLD REAL



Indulge in the epitome of luxury living at our exclusive gated community, where your dream home awaits.

Offering a selection of 3 and 4-bedroom townhouses, our residences boast contemporary comforts, a strong sense of community, and a coveted central location.

Crafted to elevate your lifestyle, each townhouse exudes spaciousness with all bedrooms featuring ensuite facilities, along with the convenience of an additional outhouse.

Experience modern convenience with our fully-equipped kitchens, complete with top-of-the-line appliances including ovens, refrigerators, microwaves, kitchen extractors, fitted air conditioners, and water heaters.

Beyond the confines of your home, our community presents a plethora of amenities tailored to meet your every need. Stay active at our cutting-edge gym, or unwind by taking a refreshing swim in our inviting pool.

Security and privacy are paramount within our gated enclave. With round-the-clock surveillance and a comprehensive security camera system, residents can enjoy peace of mind at all times.

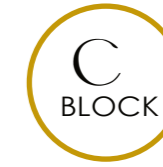
Nestled in the heart of the city, our prime location offers unrivalled access to shopping, dining, healthcare, education, and entertainment options. Combining tranquillity with proximity to major thoroughfares and public transport, commuting to work or school is effortless. Embark on the journey of luxury living today by visiting our esteemed community. Discover firsthand why our townhouses stand as the epitome of refined living.

As a real estate company deeply committed to excellence, we specialize in creating homes that resonate with quality, expertise, and passion. Located in the vibrant heart of Accra, choose Bestworld for unparalleled luxury living.

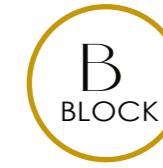


## BUILDING TYPES

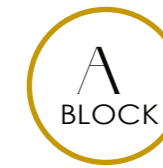
3 different types of building.



Single Storey 3 Bedroom



Double Storey 3 & 4 Bedroom



5 Bedroom



*Single Storey*  
SELLING PRICE

**\$125,000**

**REVEL**  
*in the* **VIBRANT**  
*ambience of*  
**AMRAHIA,** *Where*  
*Urban* **ENERGY**  
**SEAMLESSLY** *Melds with the*  
*Tranquility of* **NATURE.**





## Mantebea Gardens: Single Storey 3-BEDROOM TOWNHOUSE

Bestworld Real Estate Ltd provides top-notch townhouses. We prioritize high-quality buildings that are perfect for families and for investment purposes, creating a comfortable living experience.

Mantebea Gardens is a gated community.

# COMMUNITY HIGHLIGHTS



Dedicated  
Utilities Supply



30x80ft  
178sqm



24hrs  
Security



Open Green  
Space



Fitted  
Air Conditioner



Fitted  
Kitchen



Water  
Reservoir



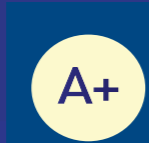
Facility  
Management



Ideal  
Location



Ample  
Parking Space



Grade A  
Furnishing



Fitted  
Wardrobe



Swimming  
Pool



Gated  
Community



Gym

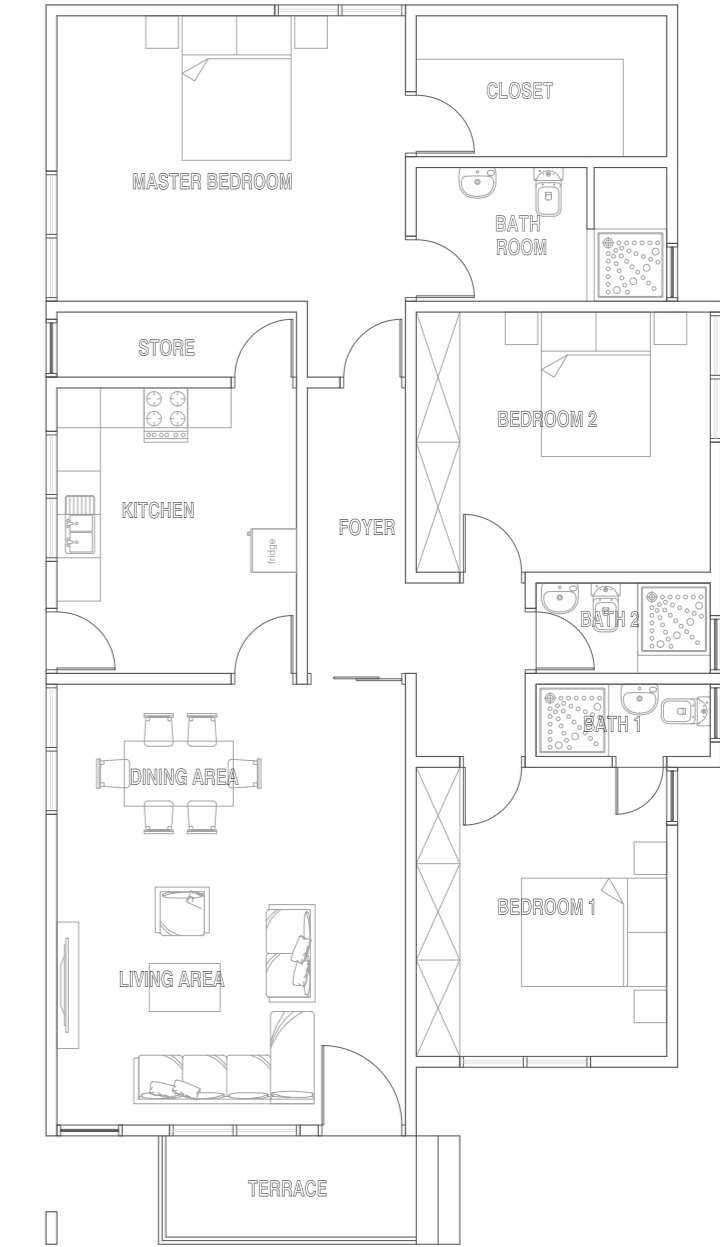
## AMENITIES AROUND THE COMMUNITY

Shopping malls (such as Palace Mall & Melcom)

Hospitals (eg: Lekma Polyclinic) Police station (on the main Spintex road), Banks, Restaurants (including Papaye, Honey Suckle).







**FLOOR PLAN**

interior



**LIVING  
AREA**



# LIVING AREA





LIVING  
AREA



# DINING AREA





# KITCHEN AREA



# KITCHEN AREA







# KITCHEN AREA

# MASTER BATH-HOUSE





# MASTER BATH-HOUSE





# MASTER BEDROOM



## GROUND FLOOR

**PORCH**

**LIVING AREA**

**DINING AREA**

**KITCHEN**

**UTILITY**

**BATHROOM**

**BATHROOM**

**MASTER BEDROOM**

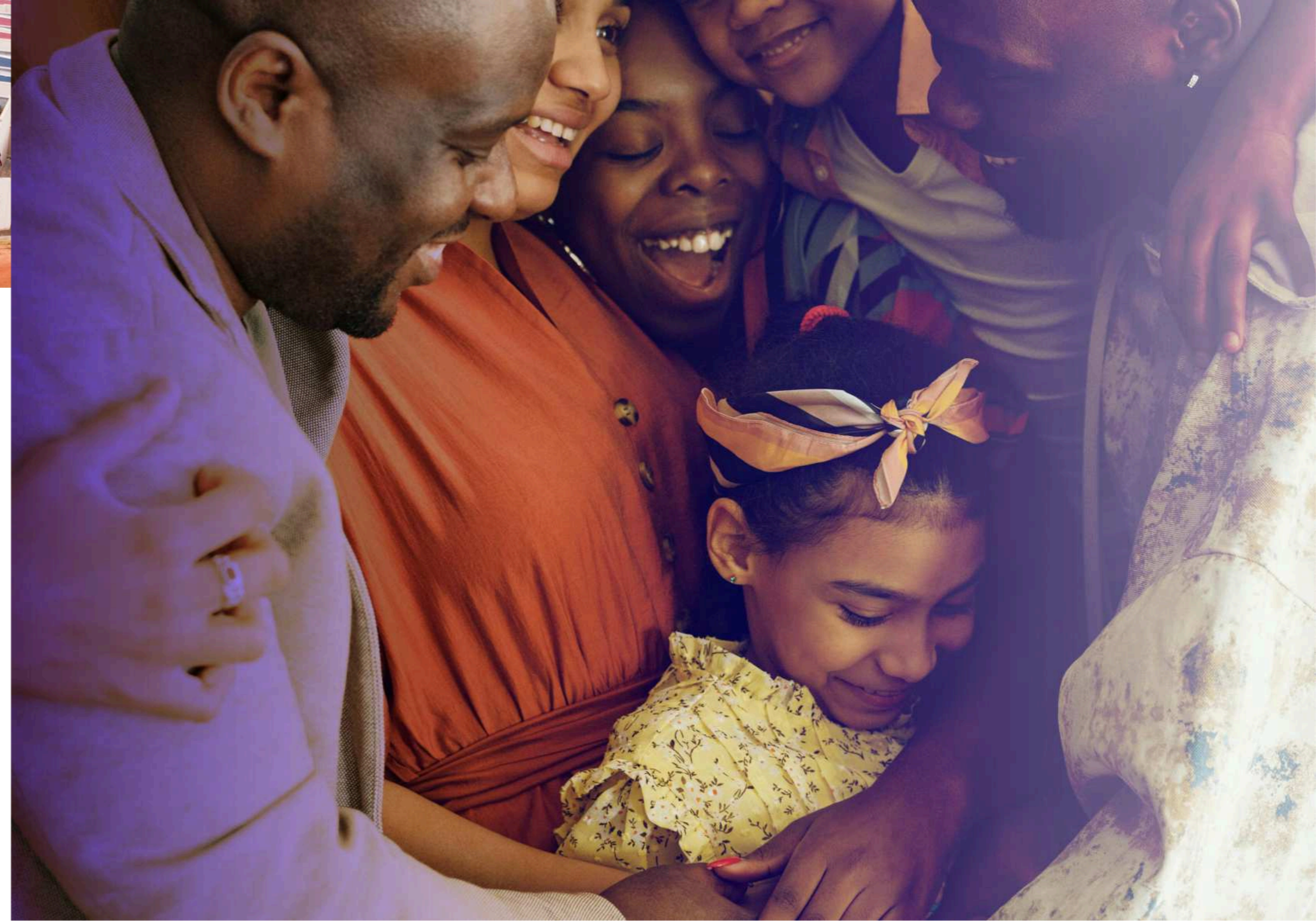
**BATHROOM**

**BEDROOM**

**BATHROOM2**

**BEDROOM 1**

**BATHROOM**





# ***Double Storey***

SELLING PRICE

**\$185,000**

**REVEL**  
*in the* **VIBRANT**  
*ambience of*  
**AMRAHIA,** *Where*  
*Urban* **ENERGY**  
**SEAMLESSLY** *Melds with the*  
*Tranquility of* **NATURE.**





## Mantebea Gardens: Single Storey 3-BEDROOM TOWNHOUSE

Bestworld Real Estate Ltd provides top-notch townhouses. We prioritize high-quality buildings that are perfect for families and for investment purposes, creating a comfortable living experience.

Mantebea Gardens is a gated community.



# COMMUNITY HIGHLIGHTS



Dedicated  
Utilities Supply



30x80ft  
178sqm



24hrs  
Security



Open Green  
Space



Fitted  
Air Conditioner



Fitted  
Kitchen



Water  
Reservoir



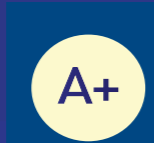
Facility  
Management



Ideal  
Location



Ample  
Parking Space



Grade A  
Furnishing



Fitted  
Wardrobe



Swimming  
Pool



Gated  
Community



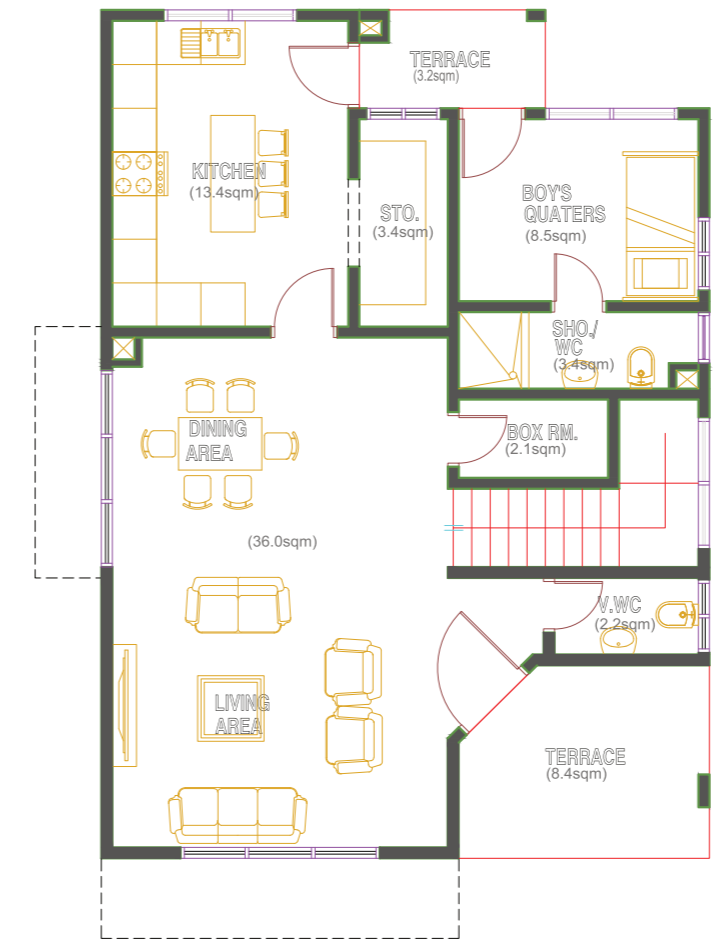
Gym

# AMENITIES AROUND THE COMMUNITY

Shopping malls (such as Palace Mall & Melcom)

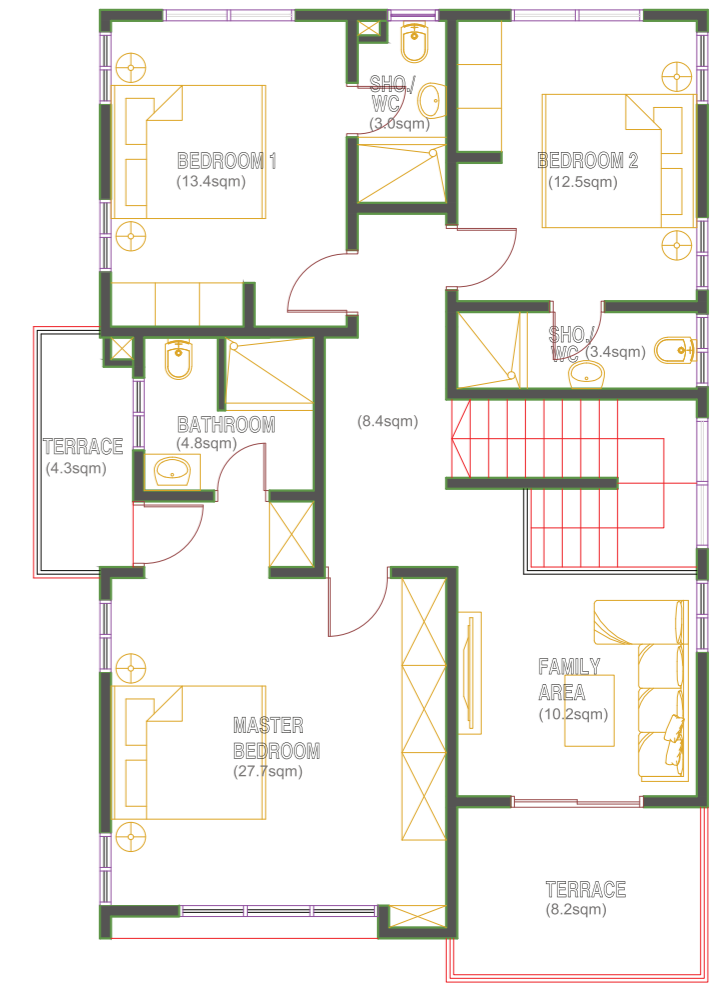
Hospitals (eg: Lekma Polyclinic) Police station (on the main Spintex road), Banks, Restaurants (including Papaye, Honey Suckle).





**GROUND FLOOR PLAN**

93.0sqm



**FIRST FLOOR PLAN**

110.0sqm

interior design



**LIVING  
AREA**

# LIVING AREA





DINING  
AREA

# KITCHEN AREA





**FAMILY  
AREA**



# FAMILY AREA





BEDROOM

# BEDROOM





# MASTER BEDROOM



# MASTER BEDROOM





# MASTER BEDROOM



## GROUND FLOOR

<b>TERRACE</b>	3.2sqm
<b>KITCHEN</b>	13.4sqm
<b>STORAGE</b>	3.4sqm
<b>OUTHOUSE</b>	8.5sqm
<b>SHO/WC</b>	3.4sqm
<b>DINING AREA</b>	36.0sqm
<b>LIVING AREA</b>	
<b>V/WC</b>	2.2sqm

## FIRST FLOOR

<b>BEDROOM 1</b>	13.4sqm
<b>SHO/WC</b>	3.0sqm
<b>BEDROOM 2</b>	12.5sqm
<b>SHO/WC</b>	3.4sqm
<b>TERRACE</b>	4.3sqm
<b>BATHROOM</b>	4.8sqm





***5-BEDROOM***  
SELLING PRICE

**\$260,000**



**REVEL**  
*in the* **VIBRANT**  
*ambience of*  
**AMRAHIA,** *Where*  
*Urban* **ENERGY**  
**SEAMLESSLY** *Melds with the*  
*Tranquility of* **NATURE.**





## Mantebea Gardens: Single Storey 3-BEDROOM TOWNHOUSE

Bestworld Real Estate Ltd provides top-notch townhouses. We prioritize high-quality buildings that are perfect for families and for investment purposes, creating a comfortable living experience.

Mantebea Gardens is a gated community.

# COMMUNITY HIGHLIGHTS



Dedicated  
Utilities Supply



30x80ft  
178sqm



24hrs  
Security



Open Green  
Space



Fitted  
Air Conditioner



Fitted  
Kitchen



Water  
Reservoir



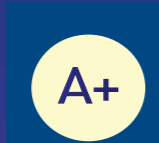
Facility  
Management



Ideal  
Location



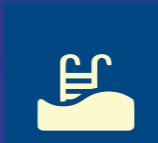
Ample  
Parking Space



Grade A  
Furnishing



Fitted  
Wardrobe



Swimming  
Pool



Gated  
Community



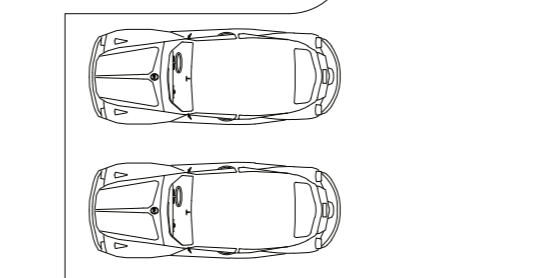
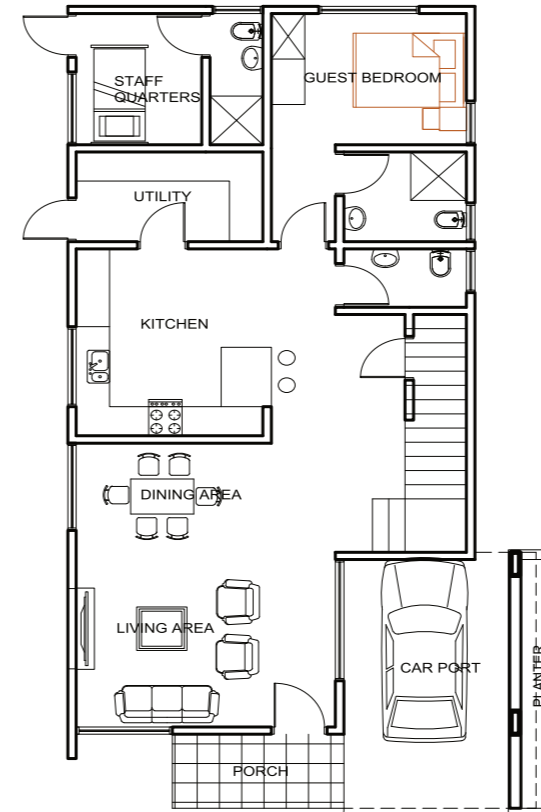
Gym

# AMENITIES AROUND THE COMMUNITY

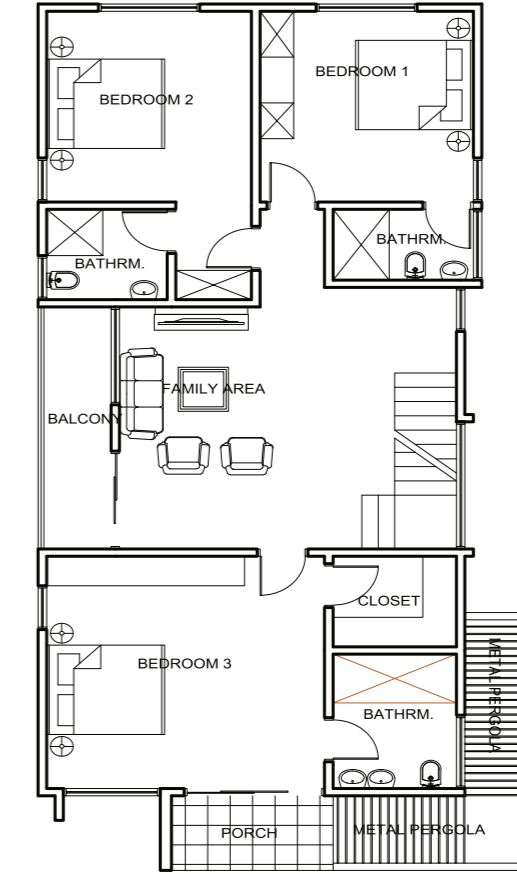
Shopping malls (such as Palace Mall & Melcom)

Hospitals (eg: Lekma Polyclinic) Police station (on the main Spintex road), Banks, Restaurants (including Papaye, Honey Suckle).

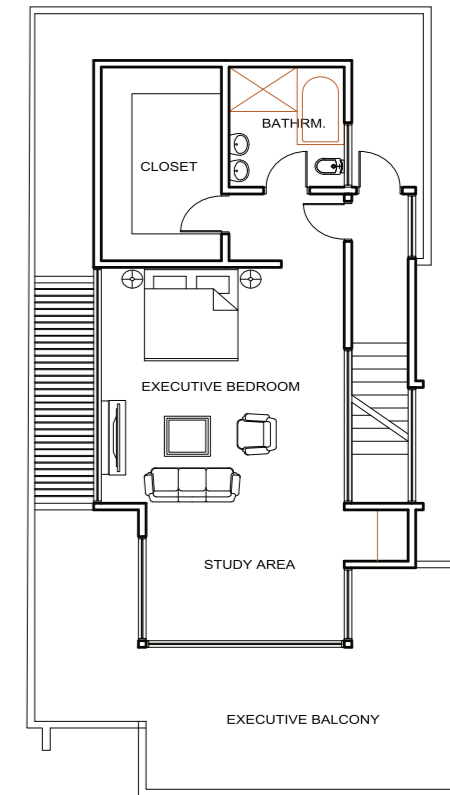




**GROUND FLOOR PLAN**



**FIRST FLOOR PLAN**



**ROOFTOP PLAN**

interior



# LIVING AREA



# LIVING AREA





LIVING  
AREA  
&  
DINING  
AREA



# DINING AREA





LIVING  
AREA

# MASTER BEDROOM





# MASTER BEDROOM

# BEDROOM





**BEDROOM**

# BEDROOM

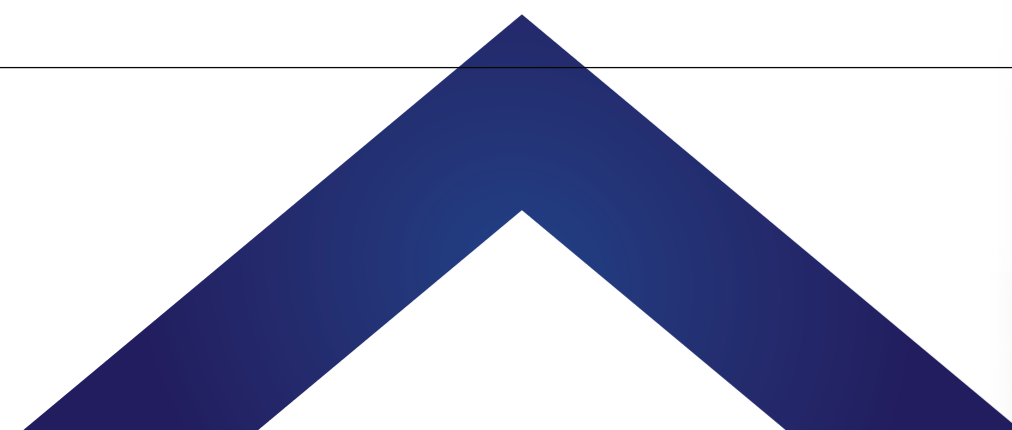




**BEDROOM**



# KITCHEN





KITCHEN



KITCHEN





# An *Extraordinary* Living Experience

Each indoor area is customized to meet all  
your requirements effortlessly coming together to  
form the home you've always envisioned.

It combines aesthetics with attention, to detail.



“The home is described as a place filled with cherished memories and joyous moments, serving as an ideal location for family activities and relaxation.”



MANTEBEA GARDENS

 [mantebeagardens](#)    [Spintex](#)

 (+233 ) 024 297 7639    [www.bestworldcompany.com](http://www.bestworldcompany.com)    [info@bestworldcompany.com](mailto:info@bestworldcompany.com)

   [@bestworldltd](#)

